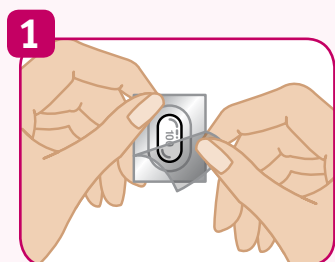
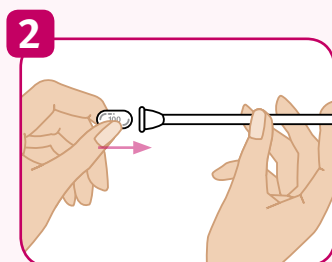




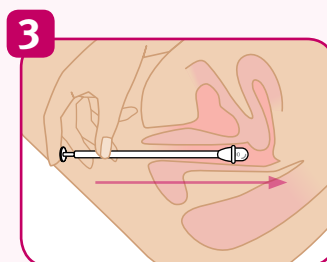
# Administration Instructions for ENDOMETRIN



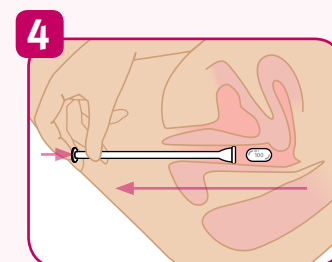
1 Unwrap the applicator and the ENDOMETRIN insert.



2 Put one ENDOMETRIN insert into the space provided at the end of the applicator. The insert should fit snugly and not fall out.



3 When using ENDOMETRIN, you may be standing, sitting, or lying on your back with your knees bent. Gently place the thin end of the applicator well into the vagina.



4 Push the plunger to release the ENDOMETRIN insert. Remove the applicator and throw it away in a waste container.

*Note: If you miss a dose of ENDOMETRIN, use it as soon as you remember, but do not use more than the recommended daily dose prescribed by your healthcare provider. Do not use any other vaginal products when you are using ENDOMETRIN.*

## ABOUT ENDOMETRIN

ENDOMETRIN is a vaginal insert that contains 100 mg of progesterone, one of the hormones essential in helping you to become and stay pregnant.

Each ENDOMETRIN insert comes with an individually wrapped disposable applicator, which should be discarded after use.

Your doctor may prescribe you ENDOMETRIN administered 2 or 3 times a day, starting the day after egg retrieval and continuing for up to 10 weeks total duration.

Use ENDOMETRIN exactly as prescribed.

## HOW ENDOMETRIN WORKS

ENDOMETRIN is designed to be placed in the vagina. The effervescent tablet is made to dissolve and deliver progesterone to the vaginal tissue.

Please read the product information enclosed with ENDOMETRIN. However, this does not replace discussions with your healthcare provider.

## INDICATION

ENDOMETRIN® (progesterone) is a vaginal insert that contains the hormone progesterone, one of the hormones essential for helping you to become and to stay pregnant. ENDOMETRIN is for women who need extra progesterone while undergoing treatment in an Assisted Reproductive Technology (ART) program.

## IMPORTANT SAFETY INFORMATION

Do not use ENDOMETRIN if you:

- Are allergic to anything in ENDOMETRIN
- Have unusual vaginal bleeding that has not been evaluated by a doctor
- Currently have or have had liver problems or cancer of the breast or genital organs
- Have or have had blood clots in the legs, lung, eyes, or elsewhere in your body

**(Please see Important Safety Information continued on back page.)**

**Endometrin®**  
(progesterone) Vaginal Insert 100mg

**FERRING**  
PHARMACEUTICALS



### Important Safety Information (continued)

Common side effects seen with ART and ENDOMETRIN included pelvic pain after surgery, abdominal pain, nausea, and swollen ovaries (ovarian hyperstimulation syndrome). Other reported side effects include abdominal bloating, headache, urinary infections, uterine cramping, constipation, vomiting, tiredness and vaginal bleeding. Vaginal products with progesterone may also cause vaginal irritation, burning and discharge.

Progesterone can increase your chance of getting blood clots. Blood clots can be serious and lead to death. Serious blood clots include those in the: legs, lungs, eyes, heart, and brain.

Call your doctor and get medical help right away if you have: Persistent lower leg pain, sudden shortness of breath, coughing up blood, sudden blindness (partial or complete), severe chest pain, sudden severe headache, vomiting, dizziness, or fainting, weakness in an arm or leg, or trouble speaking, yellowing of the skin and/or white of the eyes indicating possible liver problems.

Other risks of progesterone include: Headache, breast tenderness, bloating or fluid retention, mood swings and depression, irritability and drowsiness.

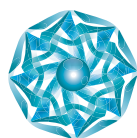
Call your doctor immediately if you have abnormal vaginal bleeding.

These are not all the side effects with ENDOMETRIN. Ask your doctor or pharmacist for more information.

Tell your healthcare provider if you have any side effect that bothers you or that does not go away. You may report side effects to FDA at 1-800-FDA-1088.

**Please see accompanying full Prescribing Information, including Patient Information.**

Please visit [www.endometrin.com](http://www.endometrin.com) for more information and to view these instructions in additional languages.



**REPRODUCTIVE  
HEALTH** HELPING TURN MORE  
PATIENTS INTO PARENTS

**FERRING**  
PHARMACEUTICALS